



VIBCO INSTRUCTIONS for CCW-2500 & 5000 Railcar Vibrator

WARNING: Failure to read and follow these installation instructions and safety precautions could result in personal injury, equipment damage, shortened service life or unsatisfactory equipment performance. All information in this document is vital to the proper installation and operation of the equipment. It is important that all personnel who will be coming in contact with this product thoroughly read and understand this manual.

1 CHECK FOR PARTS

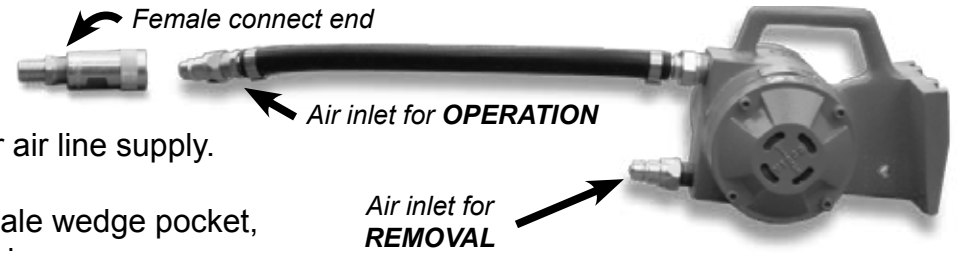
A) Listed below is all parts that should be received with your new vibrator.



- (1) - CCW vibrator
- (2) - Male disconnect ends
- (1) - Female connect end
- (1) - 18" 3/4 hose & clamps
- (1) - Turnbuckle/Clamp Assembly

2 OPERATION

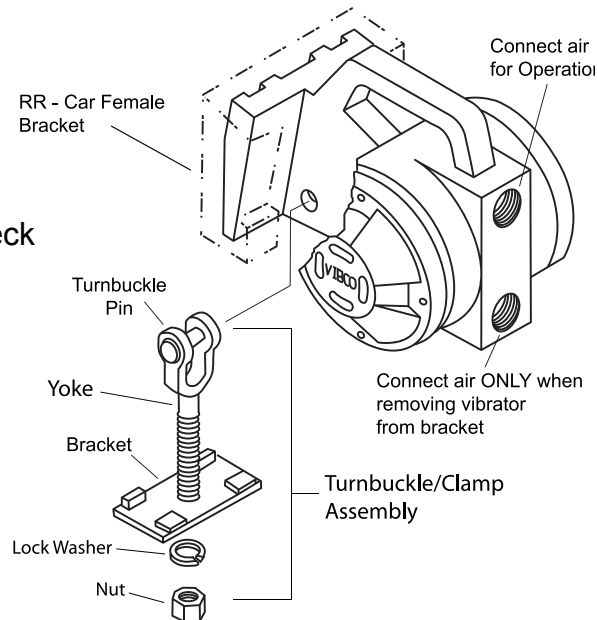
- A) Connect female quick disconnect end to your air line supply.
- B) Insert vibrator into female wedge pocket, make sure railcar gate is open.
- C) Connect air supply to **OPERATION** air inlet, vibrator will start. Vibrate until desired flow is obtained.
- D) To remove vibrator from pocket disconnect air line from **OPERATION** air inlet & attach to **REMOVAL** air inlet. This will loosen the vibrator from the pocket for easy removal.



**⚠ DO NOT ⚠
LUBRICATE**

3 TURNBUCKLE CLAMP

- A) Put vibrator into female bracket on railcar without the turnbuckle attached.
- B) Insert turnbuckle pin into yoke & through hole in neck of vibrator as shown. Replace cotter pin for safety.
- C) Slide bracket into position under female bracket & tighten nut. **DO NOT** over tighten!
- D) To remove, loosen nut & slide turnbuckle assembly out of the way. Connect air line to the **REMOVAL** air inlet (section 2), wiggle vibrator loose. If very tight tap vibrator lightly on underside with a mallet until loose.



4 TECHNICAL DATA

	Model	CCW-2500	CCW-5000
80 PSI	VPM	6000	6000
	CFM	30	50
	Force Lbs.	2500	5000
	Weight	24 lbs	58 lbs



⚠ DO NOT RUN VIBRATOR OVER 80 PSI FOR CONTINUOUS DUTY. FOR HIGHER PRESSURES UP TO 100 PSI RUN UNIT INTERMITTENTLY.



VIBCO INSTRUCTIONS for CCW-2500 & 5000 Railcar Vibrator

WARNING: Failure to read and follow these installation instructions and safety precautions could result in personal injury, equipment damage, shortened service life or unsatisfactory equipment performance. All information in this document is vital to the proper installation and operation of the equipment. It is important that all personnel who will be coming in contact with this product thoroughly read and understand this manual.

5 AIR SPECIFICATIONS

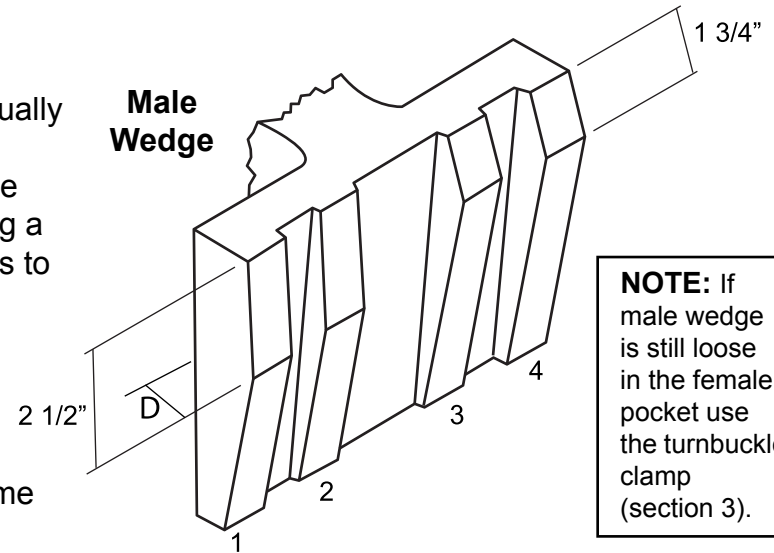


Minimum air hose I.D. should be 1 inch. Always use clean dry air to supply vibrator.

DO NOT LUBRICATE

6 WEDGE MOUNT

- A) The male wedge will eventually wear & the vibrator will not seat itself in the pocket. The wedge can be built up using a cast iron rod. Grind the ribs to the dimensions shown.
- B) Ribs 2 & 3 should be ground down 1/32" to 1/16" below ribs 1 & 4. Dimension "D" remains same on both sides.



NOTE: If male wedge is still loose in the female pocket use the turnbuckle clamp (section 3).

QUESTIONS OR CONCERNS? CALL VIBCO 24/7 401-539-2392



WANT MORE NOW? VISIT US ONLINE AT:

www.railcarvibrator.com

Links to video and application photos as well as our full line of vibratory units for the railcar industry. Remember VIBCO has live operators from 7:30AM-8:00PM Eastern Standard Time five days a week. If you need after hours assistance contact us 24/7 at 401-539-2392.



VIBCO Vibrators 75 Stilson Rd. Wyoming RI, 02898 800-633-0032